

Electrosurgery Unit

JSDD-Q2





2-in-1 Electrosurgery Unit with Argon Plasma

Comprehensive, versatile and compact.

A design that harbors all the essential components for your OR regimen: Mono-polar and APC unit, with high efficiency and great affordability.

You can perform wide range of surgeries without the need of additional modules or extensions and save valuable trolley space.

80,000,000
times per second

Is how fast this device detects even the minutest changes in the electrical flow, then calculates and adjust the optimum voltage output for best effects.

APC Unit Integrated

The built-in Argon Plasma Coagulation unit adopted a highly advanced and intelligent proportional valve control system.

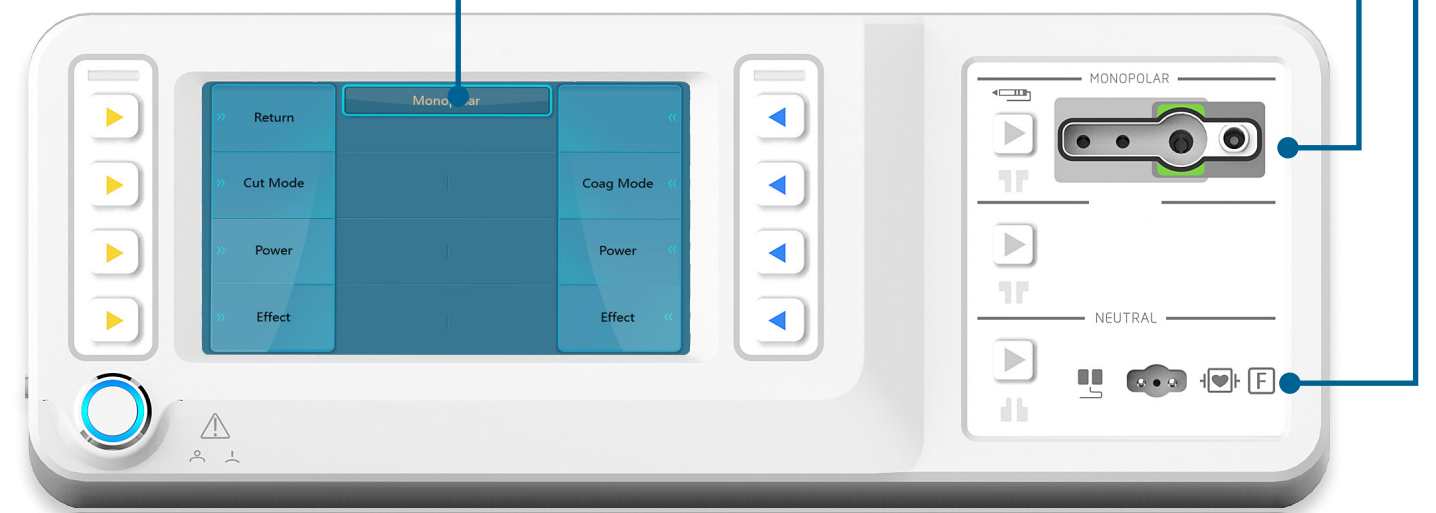
Plasma is released at a pulsing rate ensuring even distribution and minimized tissue damage.

APS & PPS Enhanced


With advanced technology intergrated inside, the Argon Plasma System & Power Peak System provide easy initial cutting and constant argon output, allowing the electrode to start in contact with target tissue without cutting or coagulation delay.

1-click | **5+4**
switch to
customized programs | Cut / Coag
Modes


Negative plate
Mono-polar
& Argon Probe




Versatile and precise tools for every purpose




Auto Cut
Fully automatic mode with careful output control. A versatile mode for beginners and electrically conductive tissues.



Dry Cut
Hemostasis effect at the cutting edge with voltage regulation and modulation waveforms.



EndoI Cut
Automatic mode with fractioned cut and alternating cut/coag effect. For endoscopic needle(I) applications.



EndoQ Cut
Automatic mode with fractioned cut and alternating cut/coag effect. For endoscopic snare (Q) applications.

APC Enhancement

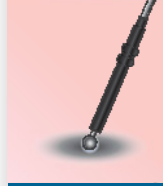
Use argon support to enhance performance in any mode and improve incision quality.

CUT MODES


Comprehensive solution to hemostasis and devitalization

APC Enhancement

Use argon to enhance all non-contact APC coagulation.




Force Coag
Basic, fast and effective coagulation for devitalization or hemostasis with low thermal penetration and moderate carbonization.




Soft Coag
Low intensity coagulation at large coverage with minimum carbonization and low adhesion risk.



Spray Coag
Fast and effective non-contact coagulation with standard instrument or special probe.



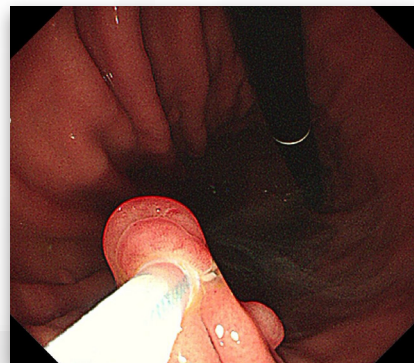
Swift Coag
Fast effective coagulation which is very suitable for dissection with high hemostasis due to its limited tissue-cutting property.



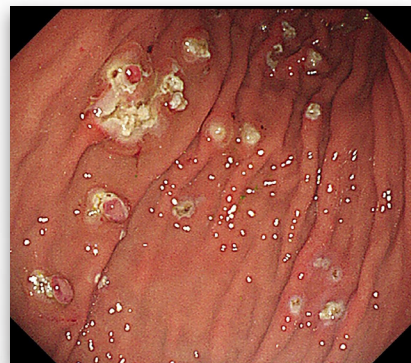
Spray Coag/Spray Coag I & II
Efficient, non-contact coagulation at superficial layer with continuous or pulsed (I/II) spray and low thermal penetration.

COAG MODES

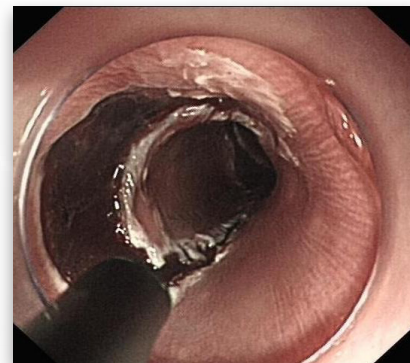
Clinical Gallery



EMR



EMR



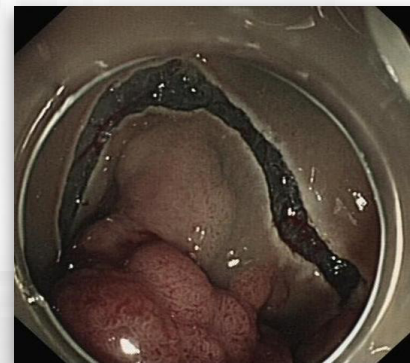
ESD



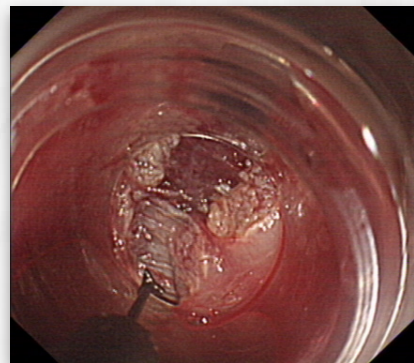
ESD



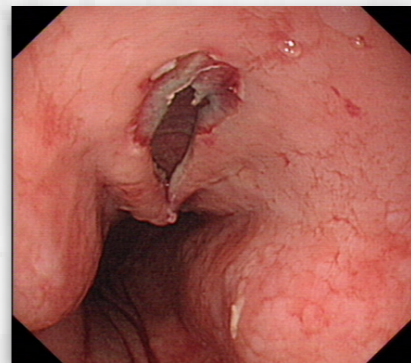
ESD



ESD



POEM



POEM



POEM



STER



STER



STER

Mode Recommendation for Procedures

	ESD			POEM			EMR	ERCP	STER	
	Marking	Incision	Dissection	Incision	Dissection	Cut	Snare Cut	Cut	Incision	Dissection
Auto Cut										
Dry Cut								●		
EndoI Cut		●	●	●	●	●		●	●	●
EndoQ Cut		●	●	●	●	●	●		●	●
Force Coag	●		●		●					●
Soft Coag	●									
Swift Coag			●		●					●

Technical Specifications

Features

- Cut & Coagulation Modes: 9
- Effect: 6
- Argon Beam Coagulator

Power Output

- Maximum CUT output: 300W for 500 Ohm
- Maximum COAG output: 200W
- Frequency: 381KHZ

Argon

- Argon Input Pressure: 0.15 ~ 0.90Mpa
- Argon Output Flow Rate: 0.1 ~ 9.0 L/min (Adjustable by 0.1L/min)

Dimensions and Weight

- 420 mm(W) * 395 mm(D) * 190 mm(H)
- 10 Kg

Power Requirements

- Voltage (AC): 100-240 V
- Frequency: 50/60Hz
- Input 880VA
- Fuse: F5AH250V * 2

Optional Accessories

- Trolley
 - Argon Plasma Probe
-

Chongqing Jinshan Science & Technology (Group) Co., Ltd.

Address: 18 Nishang Road, Yubei District, 401120 Chongqing, China

Tel: +86-23-86098151 Fax: +86-23-86098777

english.jinshangroup.com

international@jinshangroup.com



Distributed by:

202008