

ENDOLINQ™ Irrigation Pump

Product Brochure



Overview

Designed to deliver powerful, adjustable and steady flow, Endolinq W1 is your ideal choice of Endoscopic Irrigation Pump. Work compatibly with all major endoscopic brands, it helps physicians to swiftly clear out bubbles, blood and other substances that obstruct the view, achieving higher diagnostic accuracy and better outcome.

Flow adjustments

Bright LED indicator with 10-Level flow control.
Smart and easy adjustments.

Safety

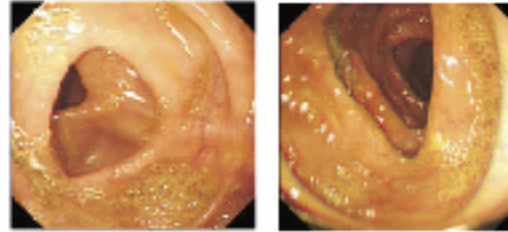
System automatically cut off if connection falls off.

Auto switch-off

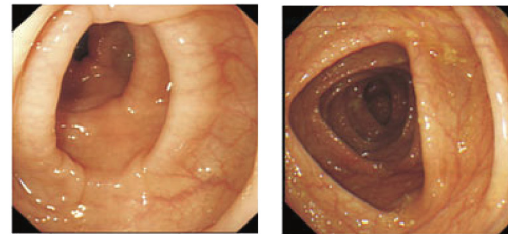
Irrigation automatically stops every 20-second interval.

Compatibility

Endolinq works with all major endoscopy and colonoscopy brands.



Pre flush



After flush

Product specifications

Input and output

Maximum feeding pressure:
<400 kPa
Flow rate:
0 - 1000 ml/min

Product size and weight

Dimensions:
324 mm(W) * 160 mm(D) * 155 mm(H)
Weight:
6 Kg

Function

Single output duration: <20s
Operation noise: < 60 dB(A)

Chongqing Jinshan Science & Technology (Group) Co., Ltd.

NO. 18 Nishang Road, Yubei District, 401120, Chongqing, China

T: +86-23-8609 8096 F: +86-23-8609 8777

Email: international@jinshangroup.com

www.jinshangroup.com



Distributed by:

202401